

## Assessment Information for Parents

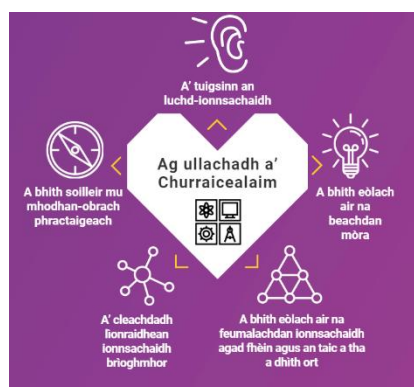
### What is Assessment?

Assessment in primary schools refers to the methods teachers use to evaluate pupils' understanding, skills, and progress across the curriculum. It helps to ensure that children are meeting learning goals and to identify areas where support or consolidation of learning is needed.



### Types of Assessment

1. **Formative Assessment:** Ongoing assessments during lessons to monitor progress and provide feedback. Examples include quizzes, class activities, and observations.
2. **Summative Assessment:** Evaluations at the end of a learning period to measure what pupils have learned. Examples include end of unit assessments/check-ups and High Quality Assessment Tasks.
3. **Diagnostic Assessment:** Used to identify pupils' areas of strengths and any gaps in learning, generally gives an age score or national comparison. Examples include National Standardised Assessment (P1, P4 and P7 for most children) or Schonnel Spelling Test.



### The Purpose of Assessment

**Track Progress:** Helps teachers understand where a child is in their learning journey.

**Inform Teaching:** Guides teachers in adapting lessons to meet individual needs.

**Support Learning:** Identifies areas where additional support may be required.

**Encourage Reflection:** Promotes self-assessment and goal-setting among pupils.

### How Can Parents Support Assessment?

**Stay Informed:** Engage with teachers about assessment methods and results.

**Encourage Learning at Home:** Support homework and reading to reinforce skills.

**Foster a Positive Attitude:** Help your child view assessments as opportunities for growth rather than stressors.

**Communicate:** Share any concerns with teachers to collaboratively support your child's learning.



## Continuous Profiling and Reporting

Each child has a Profile which demonstrates their latest and best achievements. At Plockton we use Seesaw to record, share and evidence progress in learning for individual pupils across the curriculum. Parents all have access to their child's profile in Seesaw.



Reporting and Profiling for every child in P1-P7 will include

- In each term there will be a 'Snapshot of Learning' uploaded for Literacy, Numeracy and one other curricular area. Posts will show the piece of work and include the purpose of the learning, next steps and a comment from both pupil and teacher. We encourage parents to also comment on the learning.
- Twice per year parents will have an opportunity for a short appointment with the Class Teacher
- The end of year report shows where children are in the levels for Listening and Talking, Reading, Writing and Numeracy. This may be working within a level or achieved a level.

The levels in Nursery and Primary Stages are shown in the diagram below. It's important also to remember that these refer to an average and that some children will achieve the levels earlier or later than this. If you are interested to know more, please see the [Benchmarks](#) page of the Education Scotland website to see the learning outcomes being assessed at each level.

